

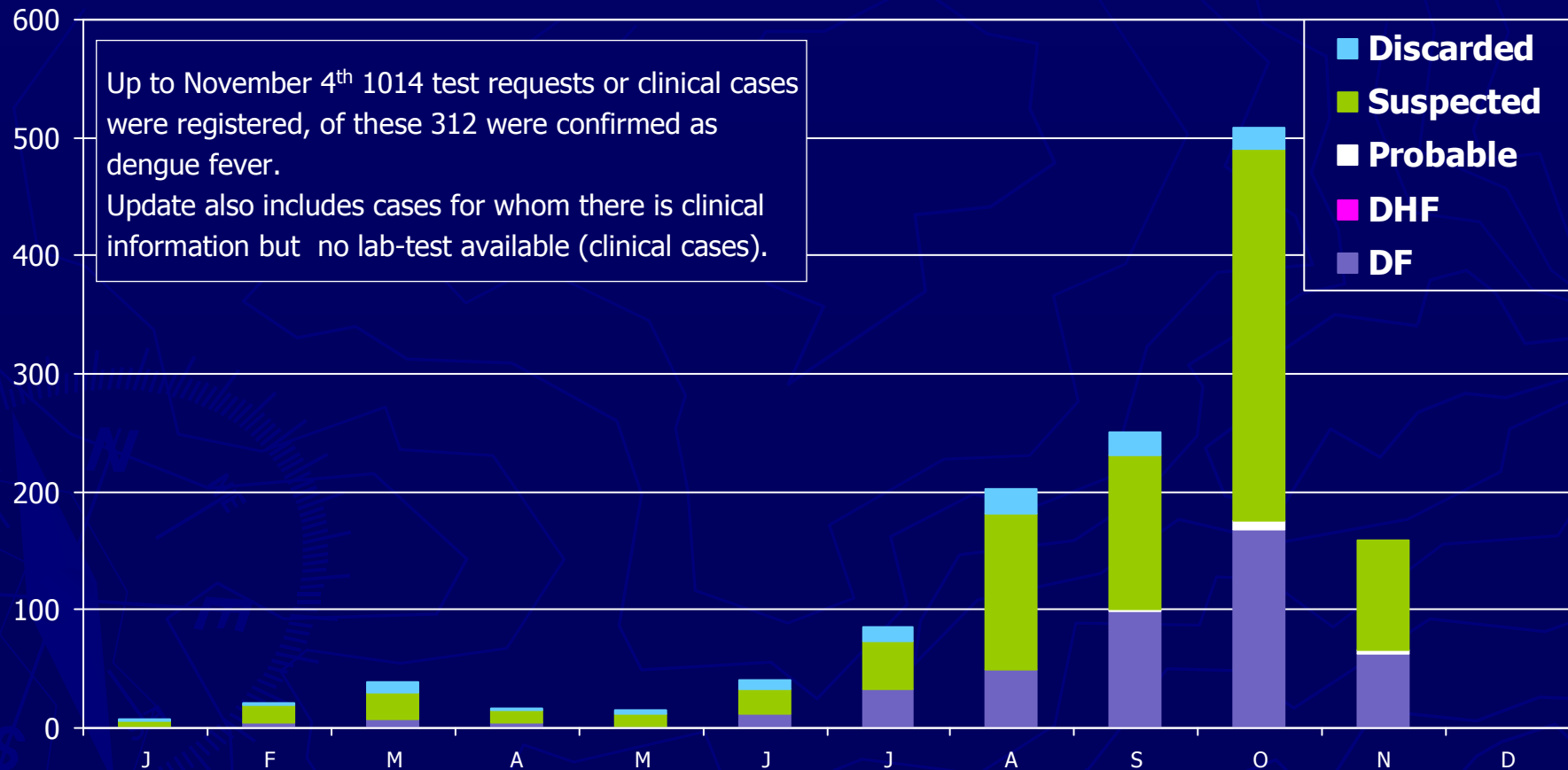
Curaçao

Dengue Laboratory Surveillance **2010**

Note: Last laboratory date included in update is November 9th.
Results received by GGD from the lab on November 12th and 15th.

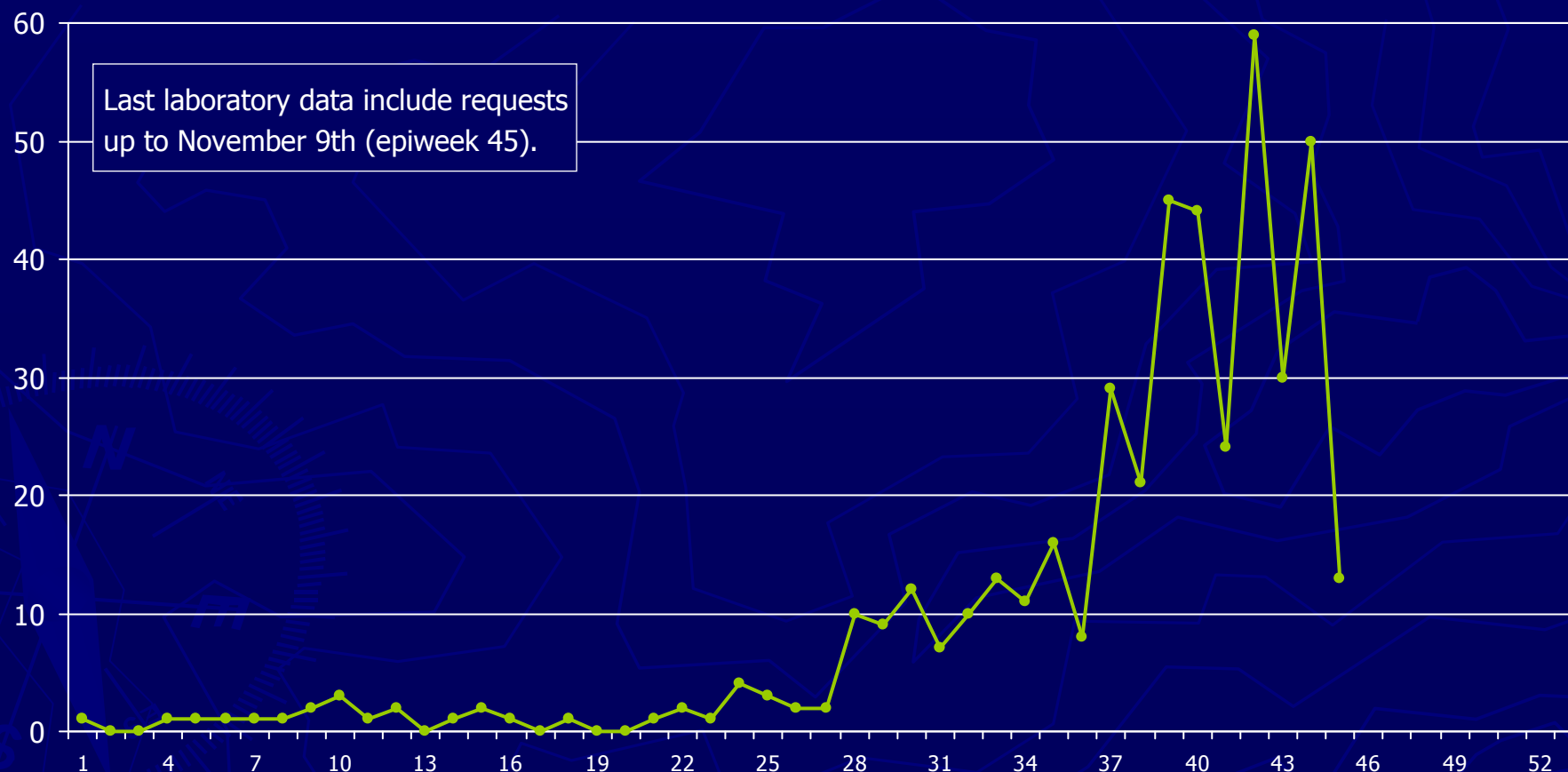
Classification of lab requests Dengue Fever

Curaçao, 2010

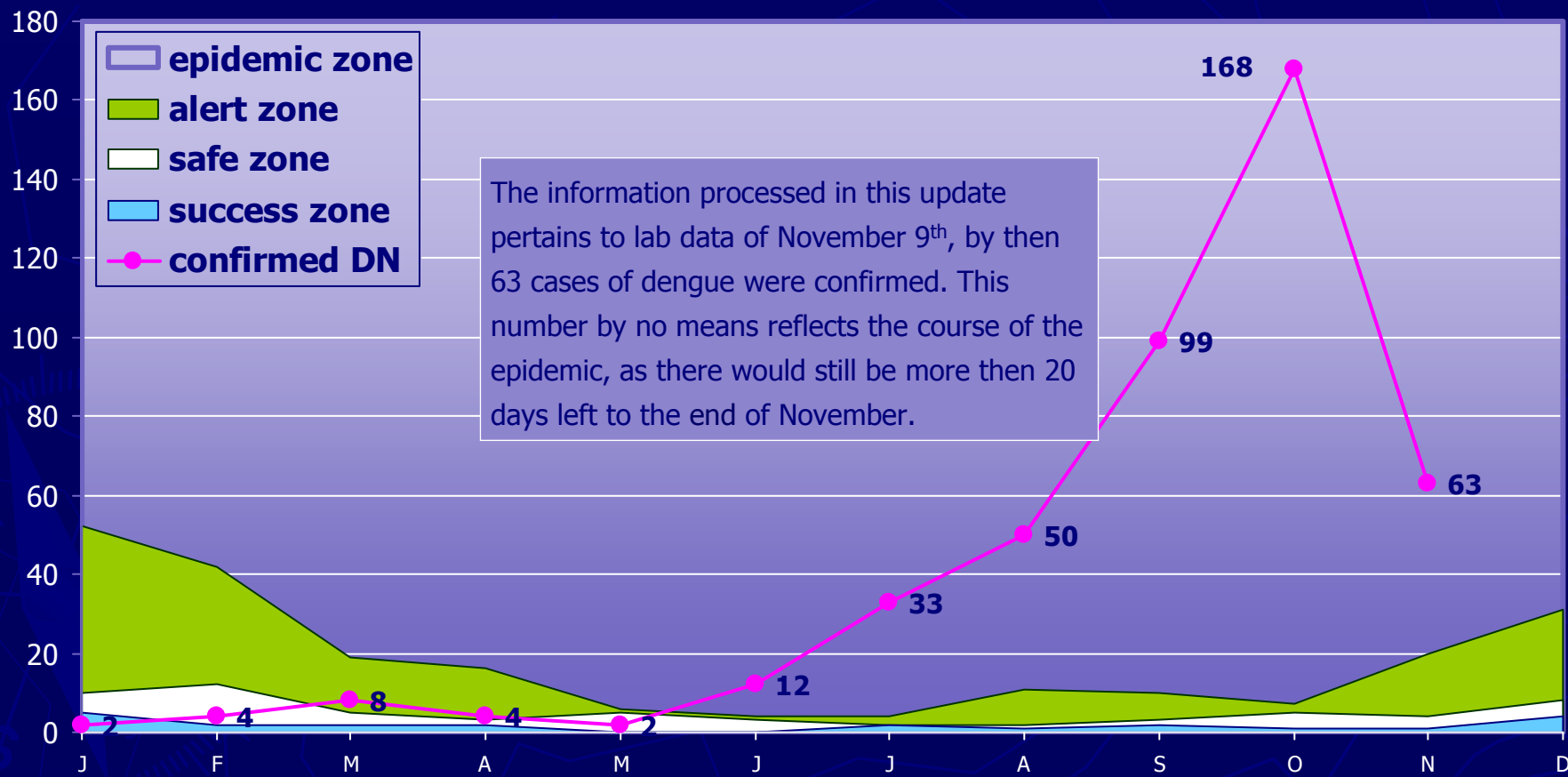


Incidence Confirmed Dengue Fever per week

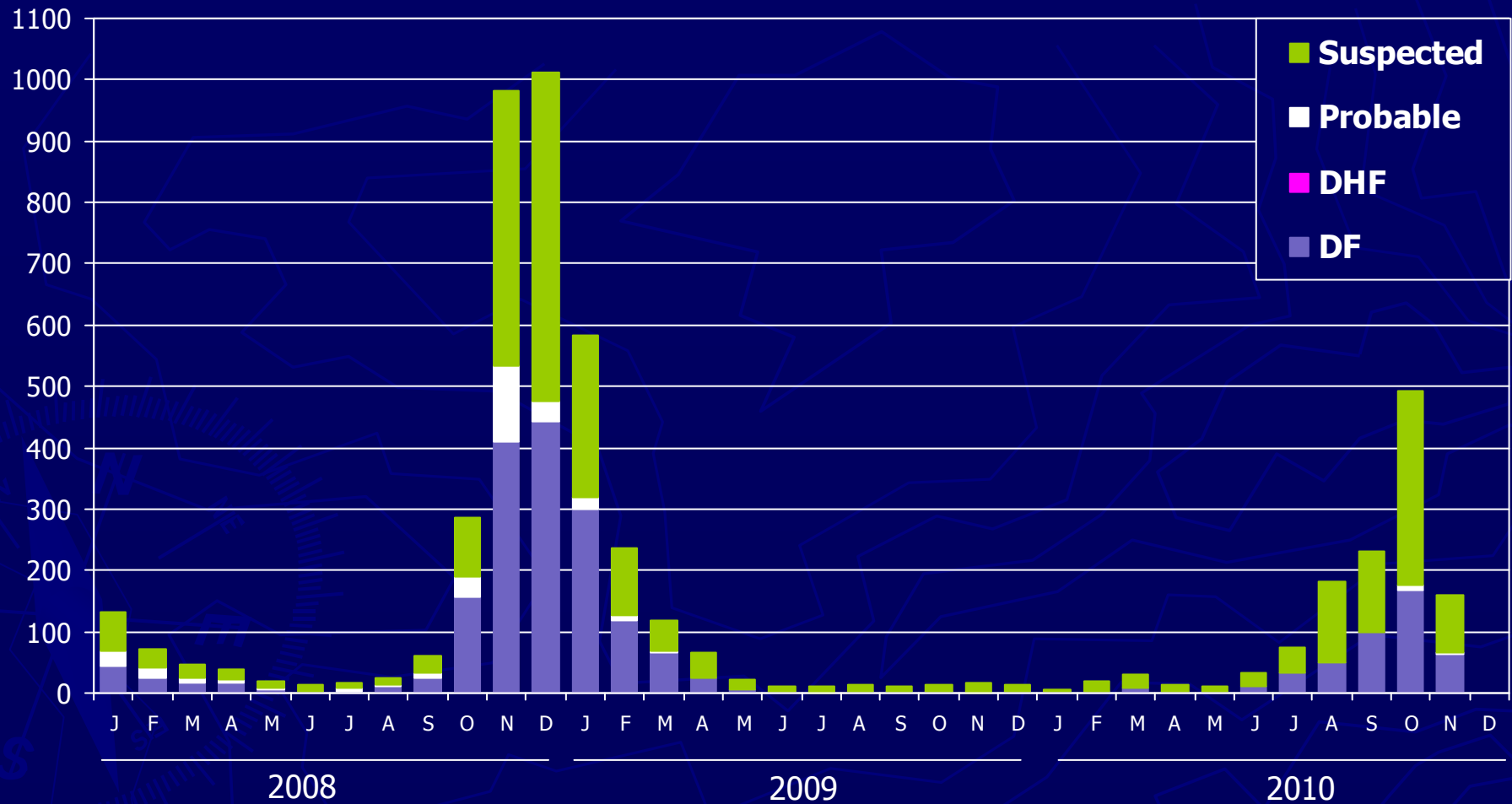
Curaçao, 2010



Confirmed Dengue in relation to the Endemic Channel Curaçao, 2010

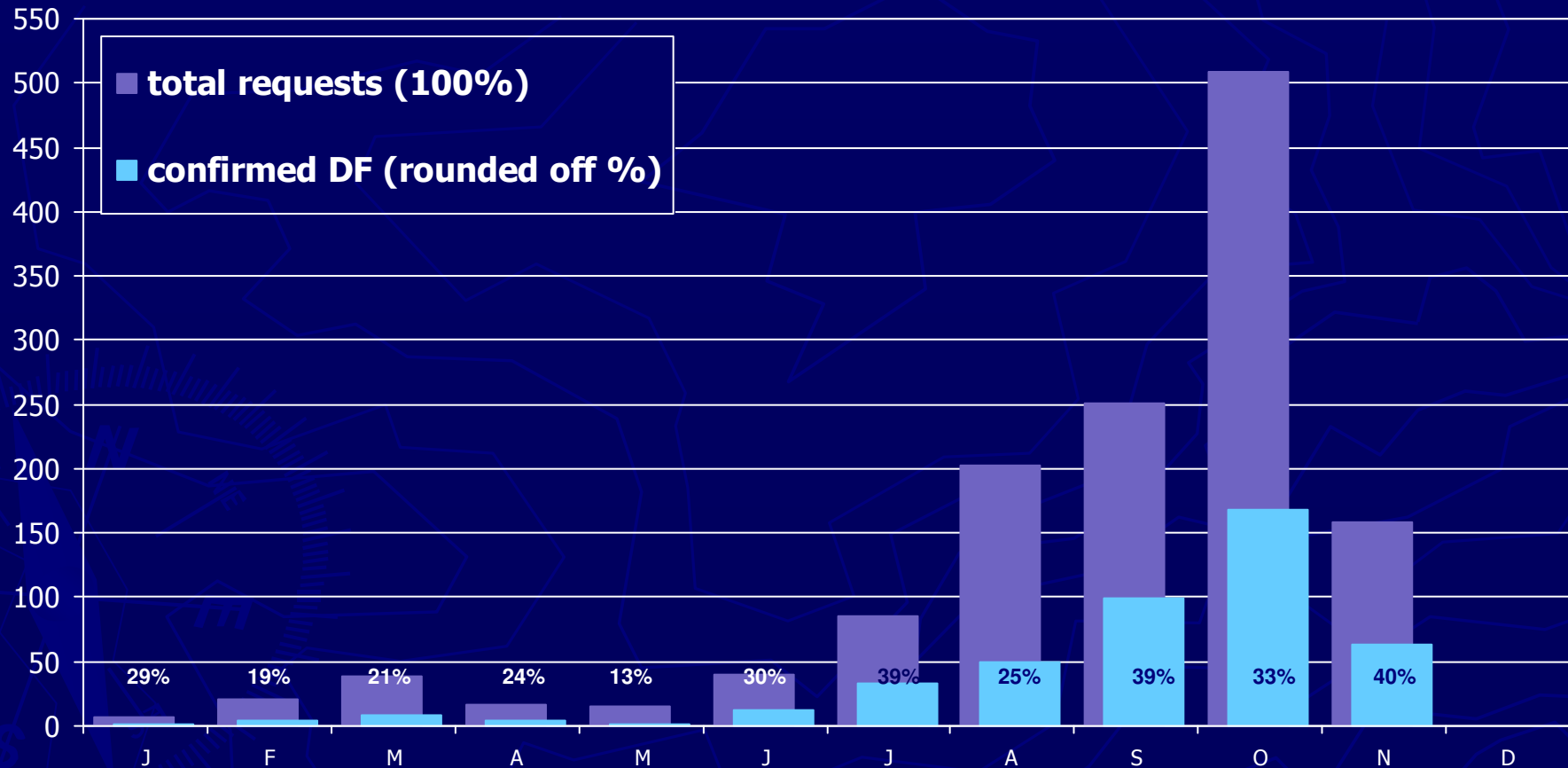


Classification of Dengue Fever Curaçao, 2008 - 2009 - 2010



Percent confirmed dengue of all requests per month

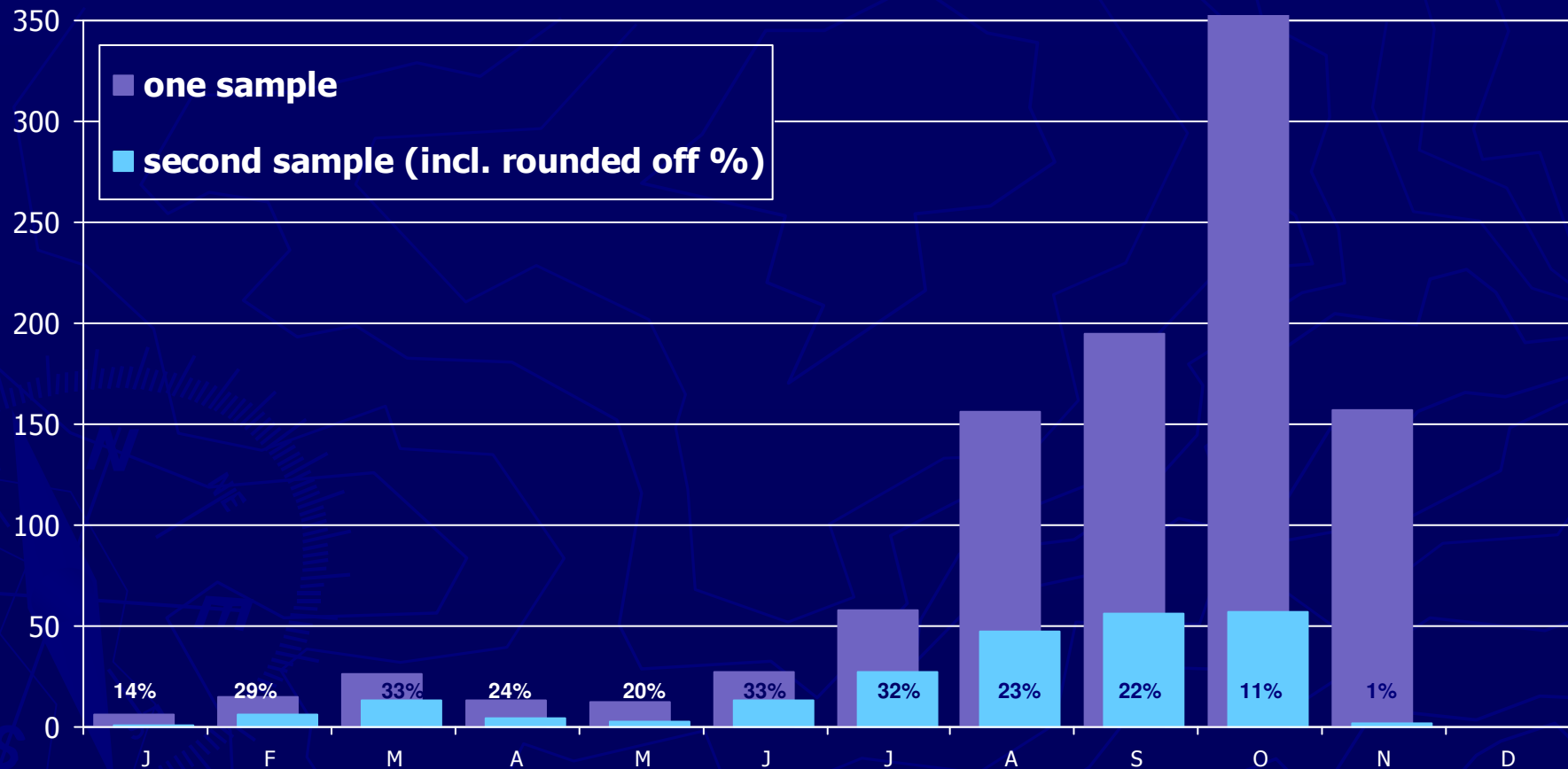
Curaçao, 2010



Number of patients with a second blood sample

Curaçao, 2010

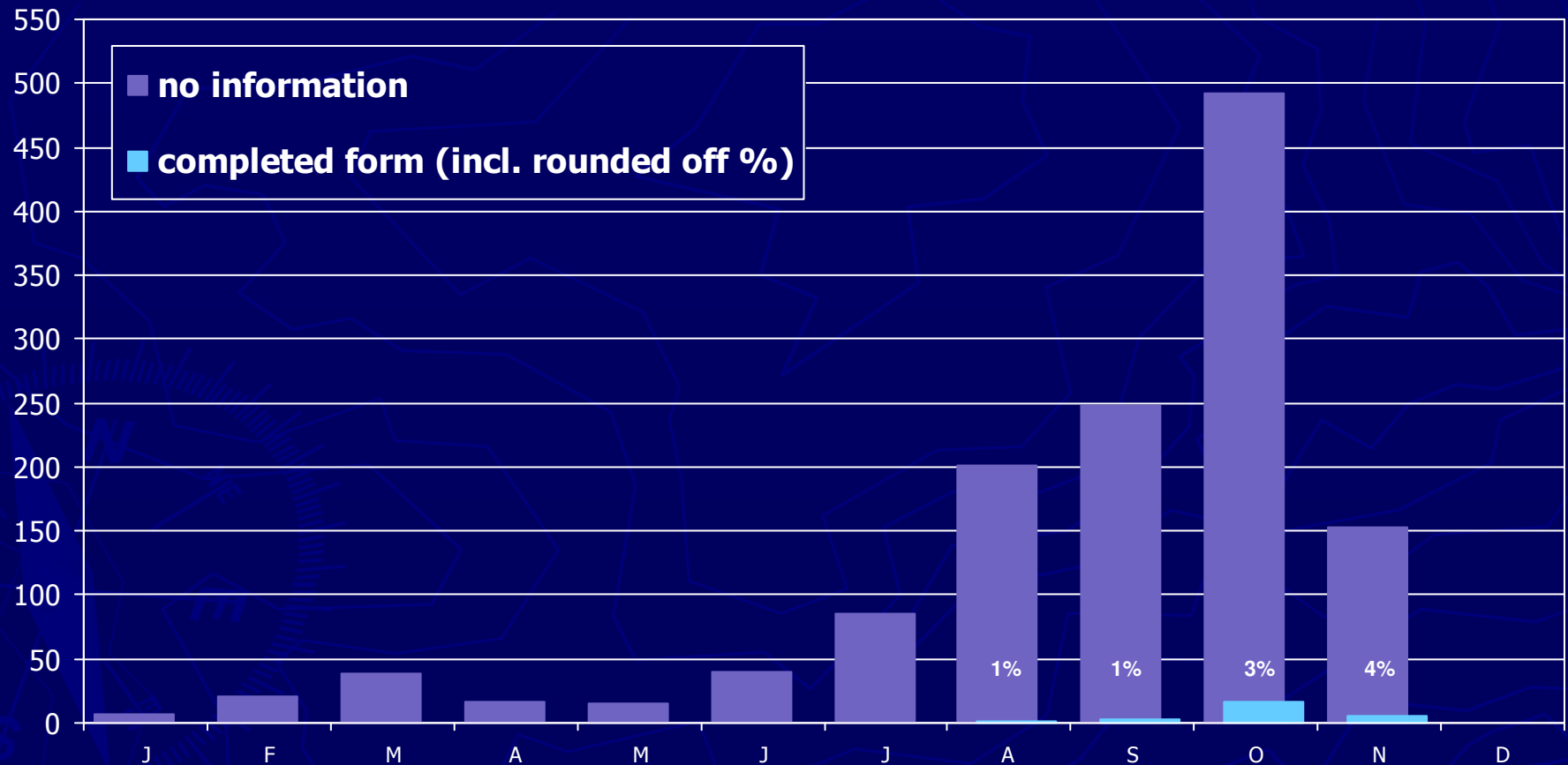
Percent patients with a second blood sample



Number of patients with a completed clinical form

Curaçao, 2010

Percent completed forms



Laboratory Confirmed Cases of Dengue and isolated serotypes per year Curaçao, 1995 - 2010

